



Buns in Ovens

Elselijn Kingma

e.m.kingma@soton.ac.uk

Who is Who?

- Setting up tables

Who is Who?

Taking Pregnancy Seriously in Metaphysics, Ethics & Epistemology:

PHILOSOPHY! <http://www.southampton.ac.uk/philosophy/research/projects/taking-pregnancy-seriously.page>

- **Elselijn Kingma**

- E.m.kingma@soton.ac.uk

- <http://www.southampton.ac.uk/philosophy/about/staff/emk1g13.page?>

- **Fiona Woollard**

- F.woollard@soton.ac.uk

- <http://www.southampton.ac.uk/philosophy/about/staff/fw1n09.page?>



Research Overview

- **Pregnancy, Birth Ethics & Obligations (Elselijn)**
 - E.g. forced treatments, alcohol, drugs (good & bad), prenatal vitamins, choose place of birth.
- **Obligations New Mothers (Fiona)**
 - E.g. Breastfeeding
- **Reasoning about Motherhood (Both)**
 - E.g. obligations vs reasons, risks
- **Metaphysics (Nature of) Pregnancy (Elselijn)**

Talk

- Opportunities for discussion
- Also: feel free to interrupt!

- Nature of Pregnancy
- Why it Matters
- IWW

Note: images of (dead) foetuses!

Metaphysics of Pregnancy

- What is the relationship between pregnant organism and foetus?
- When does one organism become two?
- What entities (if any) persist through pregnancy and birth

My Main Claims

1. Foetuses are *part of* pregnant organisms.
2. Metaphysics of pregnancy is prior to metaphysics of e.g. persons.

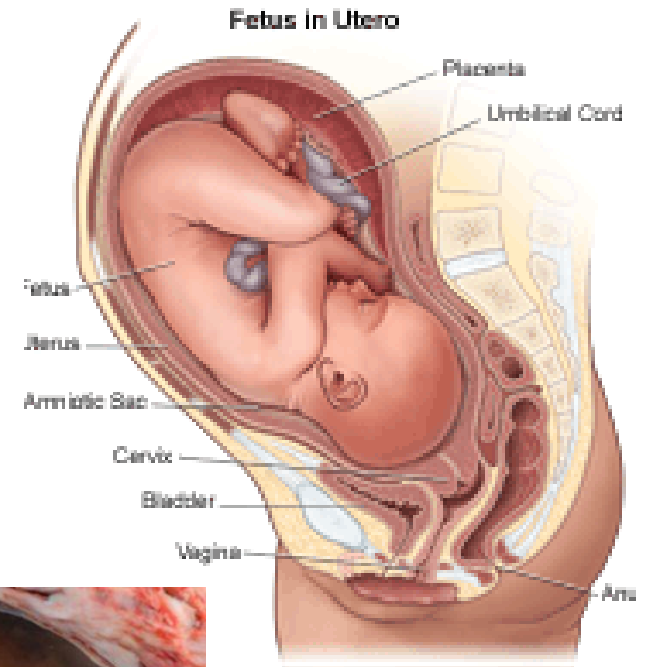
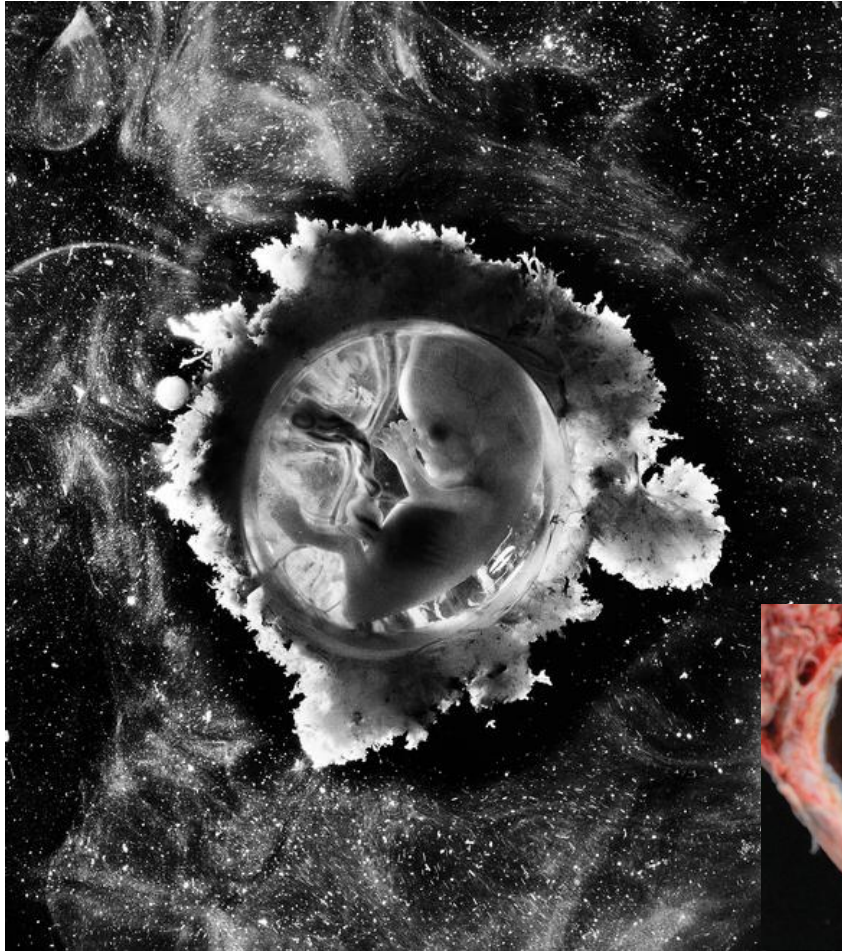
Foetal Container/Bun-in-Oven Model

Foetal Container Model: “tub of yoghurt resides inside your fridge” (Smith & Brogaard, 2013”

- NHS: ‘picture of your baby’
- Philosophy:
 - Abortion Literature
 - E.g. Olson
- Social Construction/Imagery:



Foetal Container/ Bun-in-Oven Model



Against the 'Bun in the Oven'

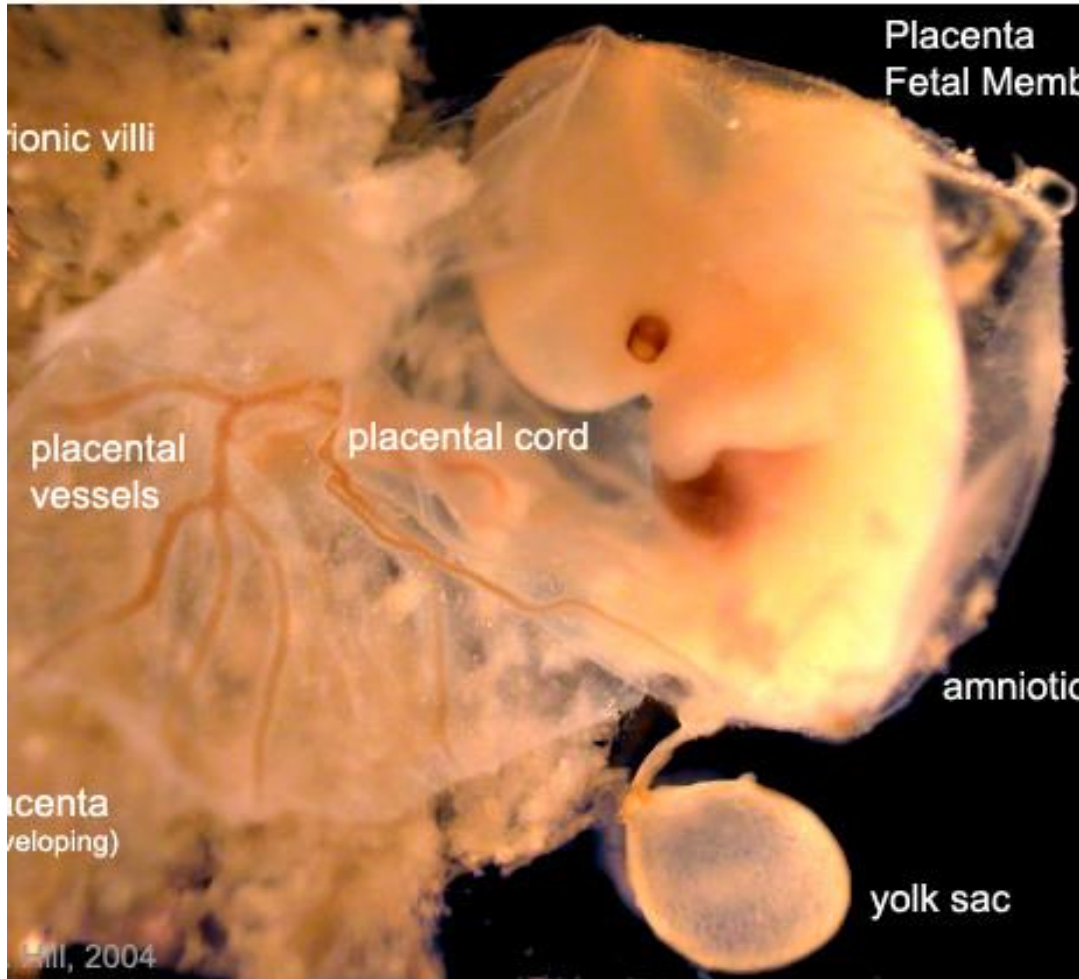
Part Whole-Claim: part of the pregnant organism as much as her organs and other bits are.

- Note: not morally same as e.g. Kidney/hair

Arguments

1. Topological Integration: Placenta
2. Metabolic integration
3. Functional integration
4. Immunological tolerance
5. Difficulty/Irreversability of Attachment

The Foetus and its bits



6. Lack of Tological Boundaries



- Foster = inside the uterine wall, not the uterine cavity.
- Amnion = inside (part of) Foster, Foster is not inside Amnion.
- Placenta = organ that is part of foster – innards spilled out.

5. Difficulty/Irreversibility of Detachment

**Birth =
substantial metabolic &
topological change.**



Discuss

- What do you feel is the picture of the nature of pregnancy that has been fed to you?
- How does it accord with your *own* experience of pregnancy? (if you have had one!) or other relevant experience (e.g. HCP/Partner)
- Do you feel one has influenced the other?

Responses to Part-Whole Claim

1. Genetic essentialism
2. Separability
3. Moral Relevance
4. Personhood/*a priori* rejection

Why does it Matter?

- Birth Important Metaphysical Event
 - *NOT* mere change of location. (*e.g. ethics lit.*)
- Body ownership
- When does Person become two? -> Dilemma
 - *Either* at Birth
 - *Or* Persons have funny properties (not distinct, part-whole)
- Relationship you vs offspring, vs mother?

Discuss

- How do you think that rejecting the 'bun-in-the-oven' model affects things, e.g.
 - Your attitude towards pregnancy/foetus
 - Ethical questions

My Guess

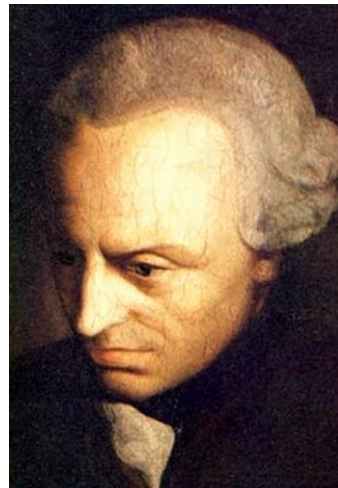
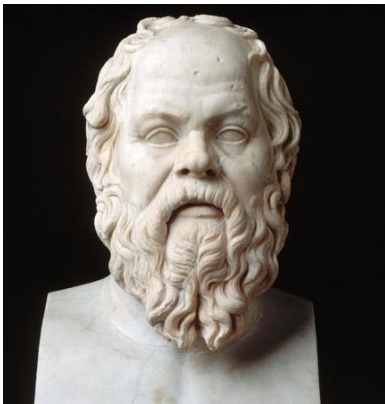
- Rights & Ethical Framework Difficult to apply
- Newborn and Foetus very different role in moral analysis
- *Personal Splitting/Budding?* => Obligations towards future selves
 - Demanding
 - Not enforcable.

Part-Whole Claim: Implications

- Multiplication Question
- Possibly Radical Revision of Entities
- Constraints on further Analyses: Dilemma

Relation to IWW?

- *Not* that Pregnancy Happens to Women
 - In fact: it doesn't!!!
- But: interesting questions about who set the agenda/canon.



EITHER

- Discuss Implication IWW
- Discuss one of the ethical questions
- Open Questions?
- Discuss Survey Questions?

Woollard

- Moral Reasons
- Moral Duties
- *E.G Breastfeeding & Experience of people who do/don't.*

Taking Pregnancy Seriously

- 13 April Workshop – all welcome

<http://www.southampton.ac.uk/philosophy/news/events/2015/04/13-pregnancy-workshop.page>

- Keen to hear from you: get in touch!
- F.woollard@soton.ac.uk
- e.m.kingma@soton.ac.uk

<http://www.southampton.ac.uk/philosophy/research/projects/taking-pregnancy-seriously.page>

BIG THANK YOU

- Linnet Evans
- Southampton Adventures in Research
- You!

Please fill in feedback and Survey.

